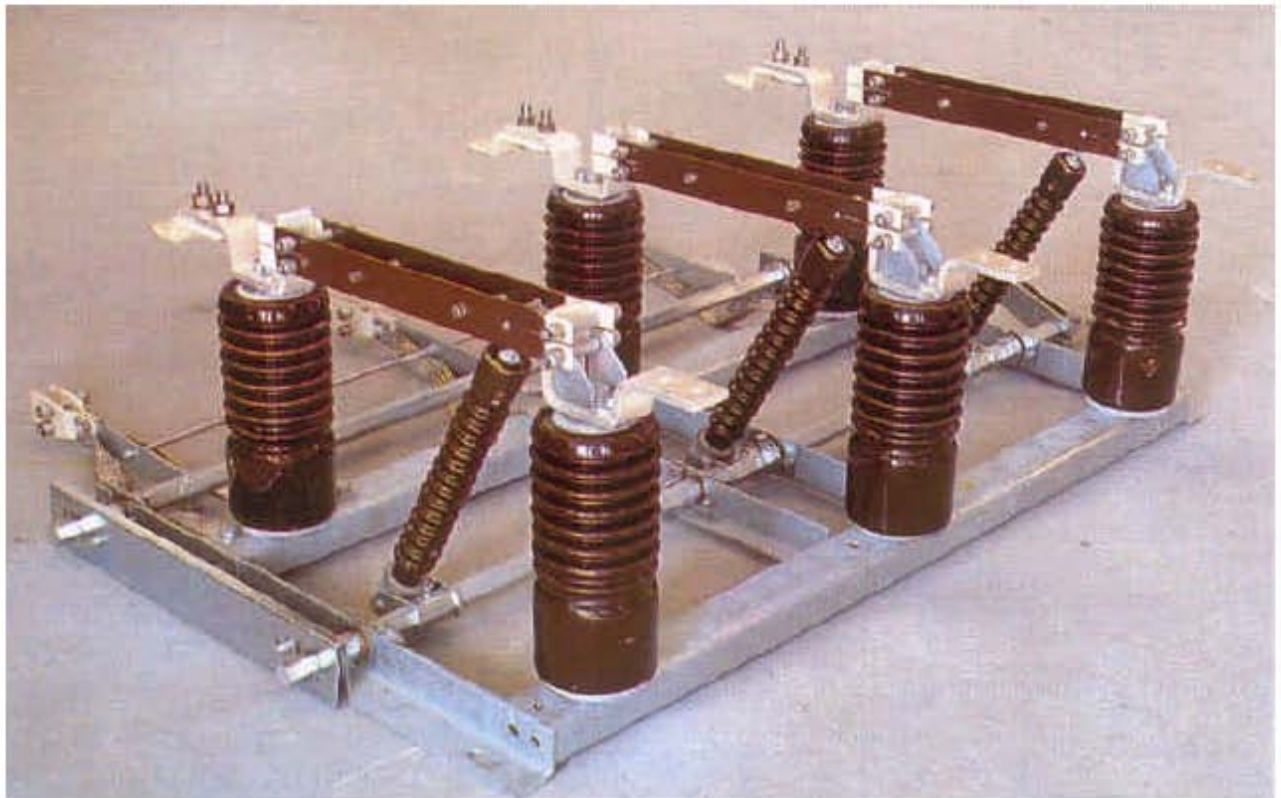




# SENERJI

## THREE-POLE OUTDOOR DISCONNECTOR C/W EARTHING SWITCH

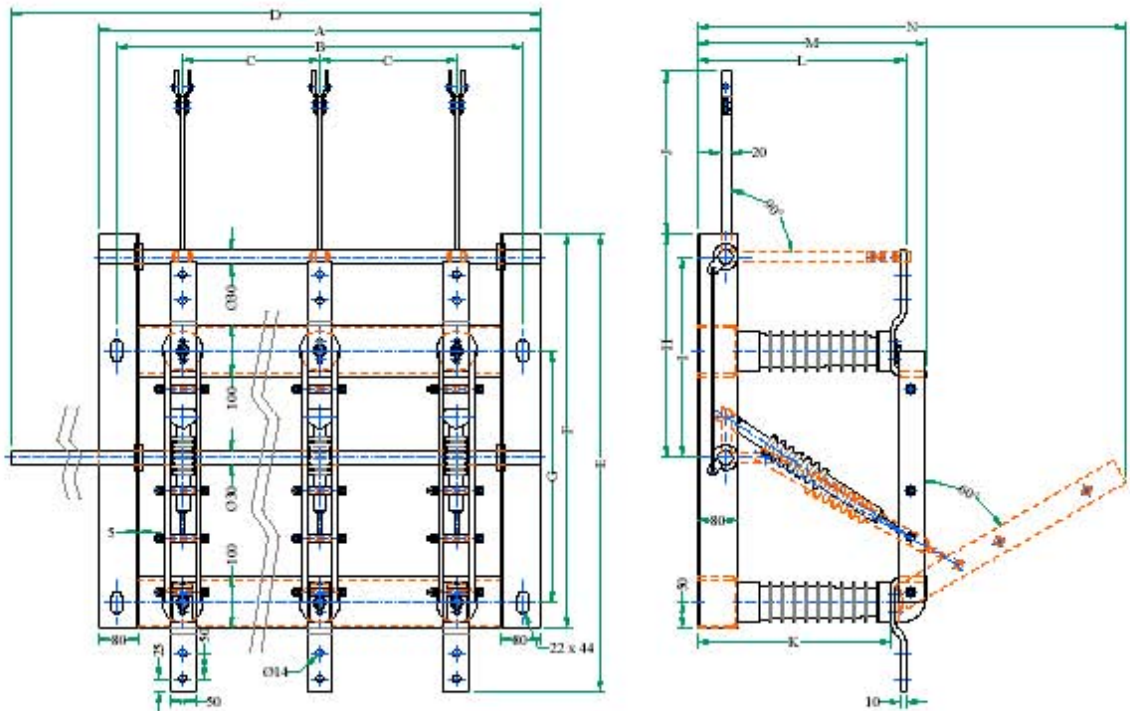


- ✓ *Designed to allow both vertical and horizontal mounting*
- ✓ *The twin sectioning blades and terminals are made of electrolytic copper. Terminals and contact surfaces of blades are silver plated.*
- ✓ *The framework is made of 5mm steel and electro-galvanized or hot dip galvanized*

**SENERJI** reserves all rights in this document and in the information contained therein. Any data contained therein may be changed without further notice. Reproduction, use or disclosure to third parties without express authority is strictly forbidden



# SENERJI



## ELECTRICAL DATA

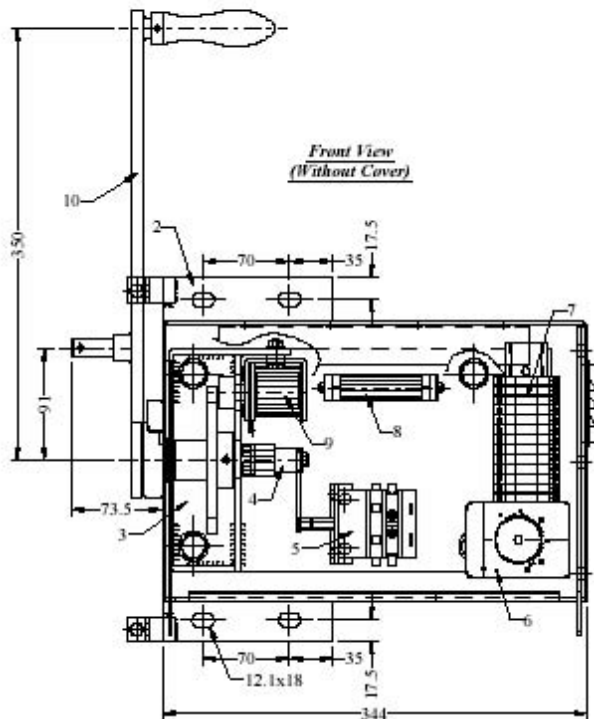
Type	Rated Voltage (kV)	Rated Current (A)	Short-Time Current (kA / 3sec)
TPODES-12	12 kV	630 or 1250	20, 25 or 31.5 kA/3sec
TPODES-24	24 kV		
TPODES-36	36 kV		

## MECHANICAL DATA

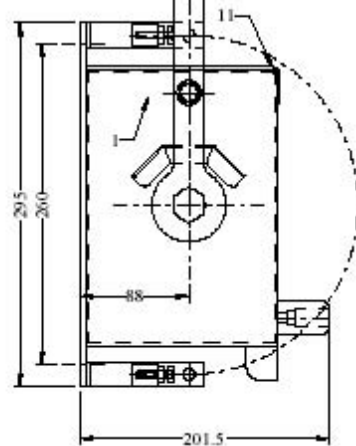
Type	Dimensions (mm)															Weight (kg)
	A	B	C	D	E	F	G	H	I	J	K	L	M	N		
TPODES-12	1065	995	400	1350	815	690	410	425	380	150	210	240	280	600	92	
TPODES-24	1260	1190	500	1630	1025	900	620	632	587	230	290	320	360	860	125	
TPODES-36	1520	1450	630	1720	1085	960	680	660	615	320	380	410	450	1000	157	

## OPTIONS

- ✓ Fuse along with Fuse holder
- ✓ Operating Mechanism Box including on demand:
  - ✧ Auxiliary Contacts Block (up to 12 N.O. & 12 N.C.)
  - ✧ Motorized Operation (48...110V<sub>dc</sub> / 220V<sub>ac</sub>)
  - ✧ Electromagnetic Interlock (48...110V<sub>dc</sub> / 220V<sub>ac</sub>)



11	Cover
10	Handle
9	Electromechanic Coil
8	Heater
7	Terminals
6	Thermostat
5	Auxiliary Switches
4	Torque hexagon
3	Internal View
2	Fixation holes Plate
1	Box Assembly
ID	DESCRIPTION



Rev.	Date	Drawn	Check	Modification
1	18/06/02	BA	CM	Drawing Update
0	18/06/02	BA	CM	First Issue

Disconnector Operating Mechanism  
Layout Drawing

Customer:
YRef:
QRef:
Dwg nb.: T1034
Sheet: 1 of 2

