



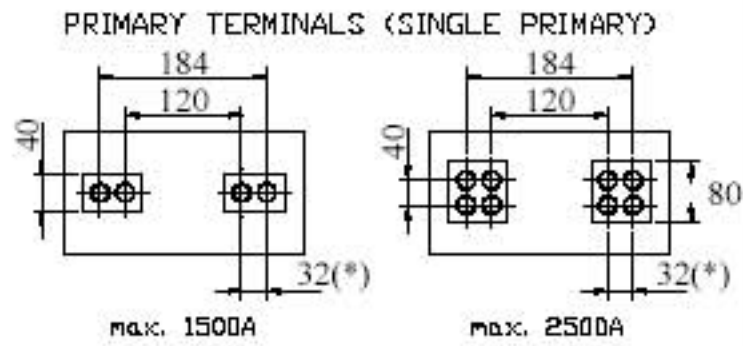
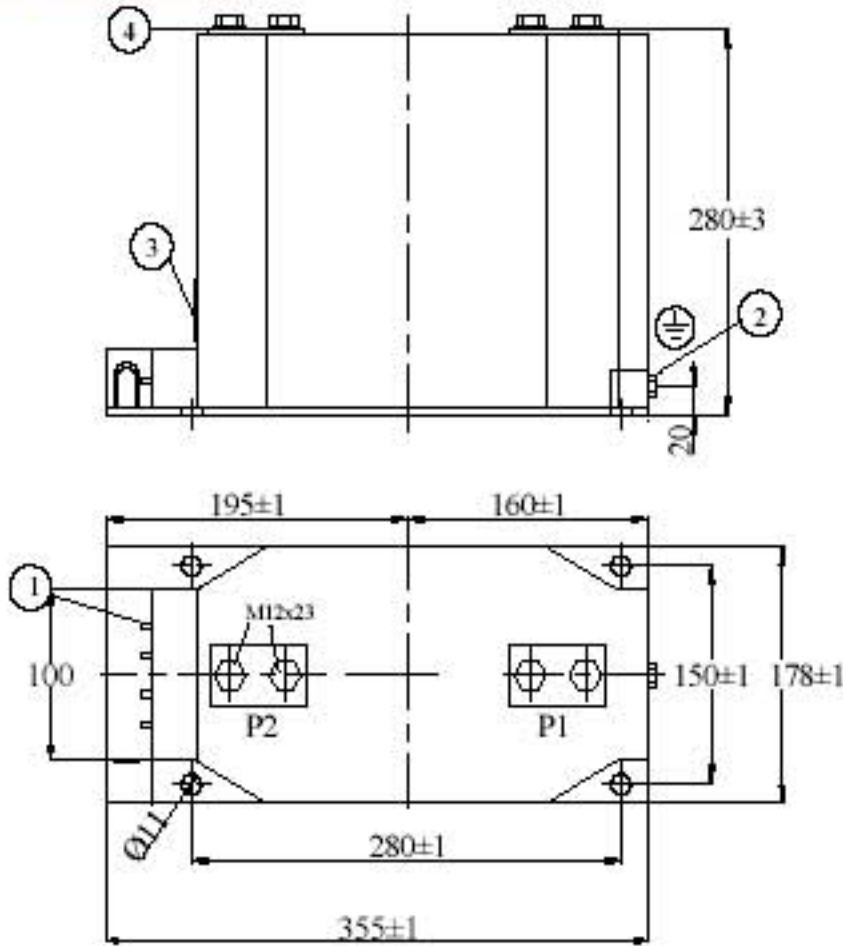
TYPE: ABT-20

Indoor, Cast-Resin Insulated Supporting Type Current Transformers

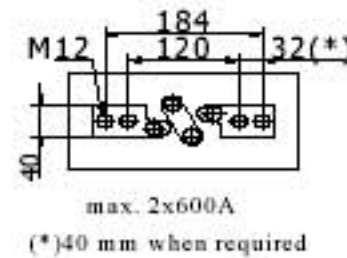
f= 50-60 Hz. DIN42600, IEC 60044-1



Catalogue No:ABT-20-2005



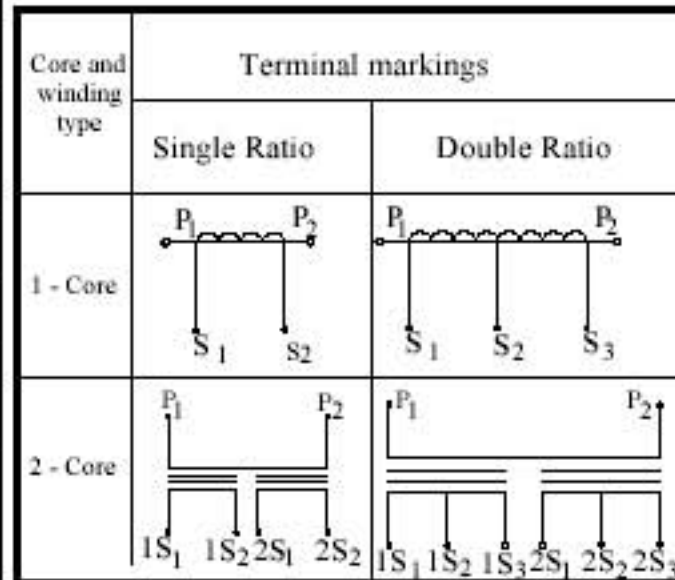
PRIMARY TERMINALS (DOUBLE PRIMARY)



- 1- Secondary terminal box (Terminal size M5)
- 2- Grounding screw size M8
- 3- Rating plate
- 4- Primary terminals

Type	ABT-20
Rated Insulation Level(kV)	17.5/38/95 or 24/50/125
Primary Current (A)	5...2000 or 2x5...2x600
Secondary Current (A)	1 - 2 - 5
Accuracy Class Measuring Protection	0.2 - 0.5 - 1 (Fs5) & 0.2S - 0.5S 5P - 10P (10 - 20)
Burden (VA)	10 - 15 - 30
Thermal Current (Ith)	Max. 30 kA. / 1 sec.
Cantilever Strength	> 5000 N
Weight (kg)	25 - 27
Primary Connection	- Double ratio with series-parallel primary windings - Double ratio with taps in secondary windings

WINDING DIAGRAM



-All dimensions in mm.
-Senerji reserves the rights to change the dimensions of the products



Address: Büyükdere Cd. No:159/12 Zincirlikuyu - İSTANBUL / TÜRKİYE
Tel: +90 212 356 21 12 Fax: +90 212 356 21 11
WEB: www.senerjieng.com Mail: info@senerjieng.com