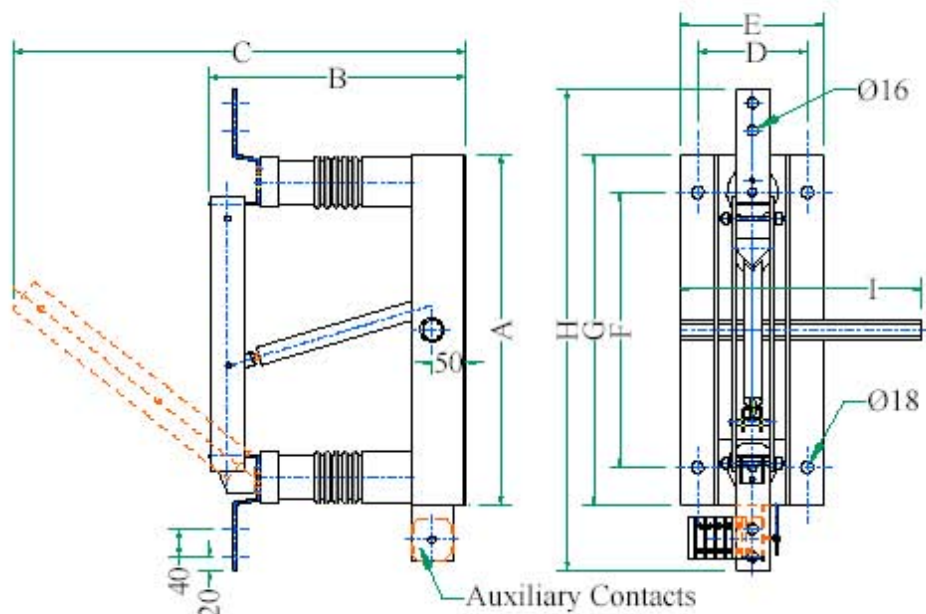




SENERJI



ELECTRICAL DATA

Type	Rated Voltage (kV)	Rated Current (A)	Short-Time Current (kA / 3sec)
SPID-12	12 kV	630 or 1250	20, 25 or 31.5 kA/3sec
SPID-17	17.5 kV		
SPID-24	24 kV		
SPID-36	36 kV		

MECHANICAL DATA

Type	Dimensions (mm)									Weight (kg)
	A	B	C	D	E	F	G	H	I*	
SPID-12	360	315	495	150	200	250	360	580	350	12
SPID-17	410	330	550	150	200	300	410	560	400	14
SPID-24	510	375	660	160	210	400	510	700	500	16
SPID-36	630	420	800	160	210	520	630	820	750	21

OPTIONS

- ✓ Auxiliary Contacts Block (up to 12 N.O. & 12 N.C.)
- ✓ Motorized Operation (48... 110V_{dc} / 220V_{ac})
- ✓ Electromagnetic Interlock (48... 110V_{dc} / 220V_{ac})
- ✓ IP54 Gasket System for Shaft